

Peran STB



Description

Peran STB is a hard wearing, decorative epoxy resin floor topping made up of colour stable quartz granules encapsulated in a clear resin binder.

Uses

Ideal for use in wet and dry process areas where the floor is subject to heavy traffic, impact and chemical spills

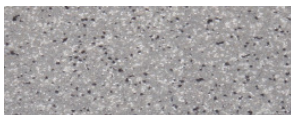
Benefits:

- Decorative floor finish
- High scratch resistance
- Easy to clean and maintain
- Excellent abrasion and impact resistance
- Seamless, hygienic finish
- High chemical resistance

Project References: -

Lightbody Celebration Cakes, Scotland; Border Biscuits, Scotland; Tate and Lyle, London; Apollo Milk, Malaysia; Nestlé Rowntree, Northumberland.

Standard Colour Chart



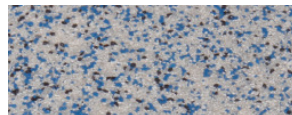
Dark Grey



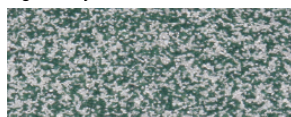
Mid Grey



Light Grey



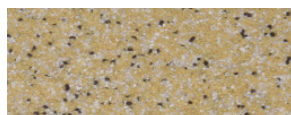
Light Blue



Green



Red



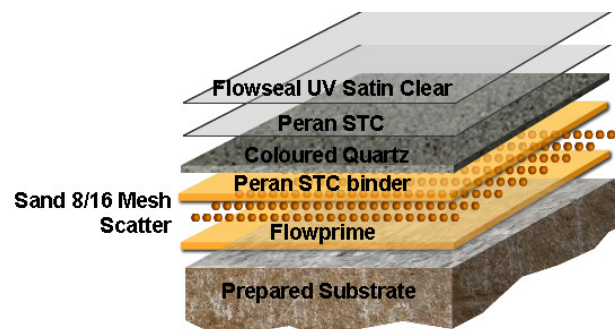
Yellow



Brown

The applied colours may differ slightly from the examples shown above. Contact our customer services for a true colour sample or a special colour match.

System Design



Model Specification

Product: Peran STB system
Thickness: 2-3 mm
Preparatory work and application in accordance with manufacturer's instructions.
Supplier: Flowcrete Asia
Telephone: Customer Service +603 6277 9575

Substrate Requirements

Concrete or screed substrate should be a minimum of 25N/mm², free from laitance, dust and other contamination. The substrate should be dry to 75% RH as per BS8204 and free from rising damp and ground water pressure.

Products Included in this System

Flowprime
Silica Sand 8/16 (mesh)
Peran Compact White
Coloured Quartz
Peran STC
Flowseal UV Satin Clear

Detailed application instructions are available upon request.

Installation Service

The installation should be carried out by a Flowcrete approved applicator with a documented quality assurance scheme. Obtain details of our approved contractors by contacting our customer service team or enquiring via our web site at www.flowcrete.com.my.

Environmental Considerations

The finished system is assessed as non-hazardous to health and the environment. The long service life and seamless surface reduce the need for repairs, maintenance and cleaning. Environmental and health considerations are controlled during manufacture and application of the products by Flowcrete staff and fully trained and experienced contractors.

Focus on the Floorzone

Flowcrete Asia Sdn Bhd is a division of the Flowcrete Group, world leaders in specialist industrial and commercial flooring. Systems available include: underfloor heating systems, floor screeds, surface damp proof membranes, decorative floor finishes, seamless terrazzo, car park deck waterproofing and corrosion protection systems... to name just a few. Our corporate objective is to satisfy your flooring needs.

Technical Information

The figures that follow are typical properties achieved in laboratory tests at 20 °C and at 50% Relative Humidity.

Fire Resistance (BS EN13501-1)	Class C _{ii} s1
Slip Resistance	TRRL Pendulum Slip Test Dry >40 low slip potential

Textured systems are recommended to meet slip resistance value requirements for wet conditions and/or surface contaminants (wet or dry) - please contact our Technical Advisors for further details and specifications

Impact Resistance EN ISO 6272	15Nm 1 kg weight >1.8 m 2 kg weight >1.5 m
Abrasion Resistance	Taber Abrader: 50mg loss per 1000 cycles (1kg Load using CS17 wheels)
Temperature Resistance	Tolerant of sustained temperatures up to 60 °C
Water Permeability	Nil – Karsten Test (Impermeable)
Vapour Permeability	ASTM E96:90 1.36g /m ² /mm/24hrs
Chemical Resistance	Contact Technical Department
Compressive Strength	>60 N/mm ² (BS 6319)
Flexural Strength	15 N/mm ² (BS 6319)
Tensile Strength	10 N/mm ² (BS 6319)
Bond Strength	Greater than cohesive strength of 25 N/mm ² concrete. > 1.5 MPa.

Speed of Cure

	10 °C	20 °C	30 °C
Light traffic	36 hrs	24 hrs	16 hrs
Full traffic	72 hrs	48 hrs	36 hrs
Full chemical cure	12 days	7 days	6 days

Aftercare - Cleaning and Maintenance

Clean regularly using a single or double headed rotary scrubber drier in conjunction with a mildly alkaline detergent.

Important Note

Flowcrete's products are guaranteed against defective materials and manufacture and are sold subject to its standard Terms and Conditions of Sale, copies of which can be obtained on request.

Further Information

To ensure you are specifying a fit for purpose flooring for your project please consult our Technical Advisors on the number below or visit our website to register your interest in specifying one of the most durable floors on the market.

Flowcrete Asia Sdn Bhd (366254-X)
The Flooring Technology Centre
Lot 37631 & 37632, Jalan 6/37A,
Taman Bukit Maluri,
Industrial Area Kepong,
52100 Kuala Lumpur, Malaysia.
Tel: +(603) 6277 9575
Fax: +(603) 6277 4645
Email: malaysia@flowcrete.com
Flowcrete Asia is an RPM company

Flowcrete Thailand
522/41, Baan Klang Muang 1,
Soi Sahakarnpramoon,
Pracha-Uthit Road,
Wangthonglang, Bangkok, 10310.
Tel: (662) 2530 9611
Fax: (662) 2530 9610

E-mail: thailand@flowcrete.com

Flowcrete Indonesia
2nd Floor, Suite 203,
Palma One Building,
Jl. HR Rasuna Said Kav. X2 No. 4
Jakarta Selatan 12950, Indonesia.
Tel: +6221 252 3201
Fax: +6221 252 0720

E-mail: indonesia@flowcrete.com

Flowcrete Vietnam
Representative Office
3rd Floor, 130 Nguyen Cong Tru Street,
Nguyen Thai Binh Ward,
District 1, HCMC, Vietnam
Tel: +848 3821 6561
Fax: +848 3821 6501

E-mail: vietnam@flowcrete.com